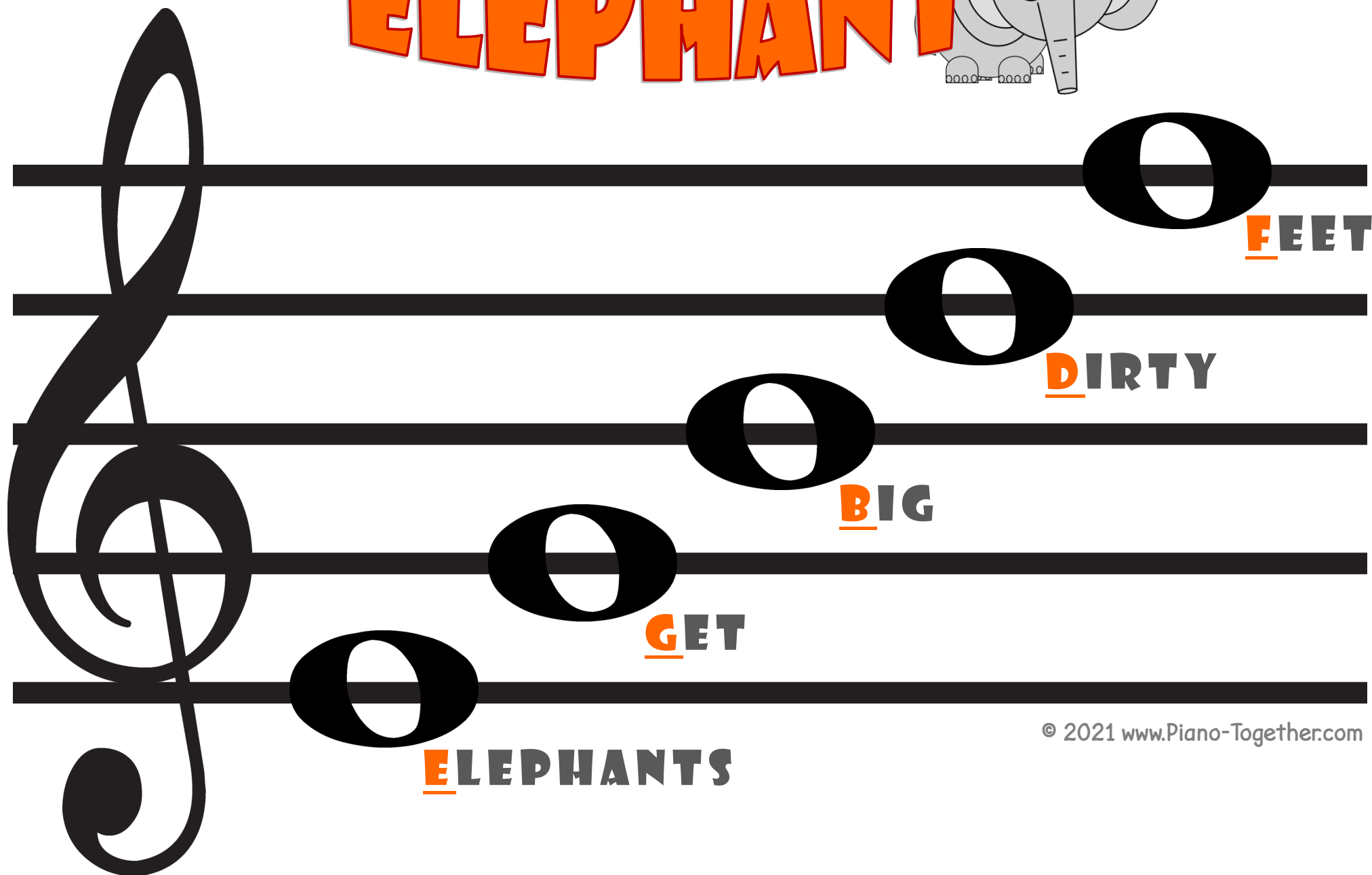
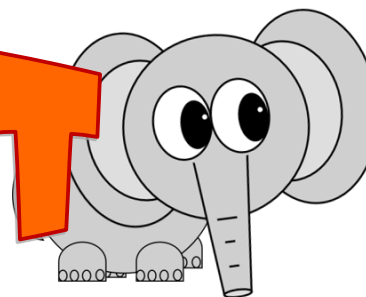
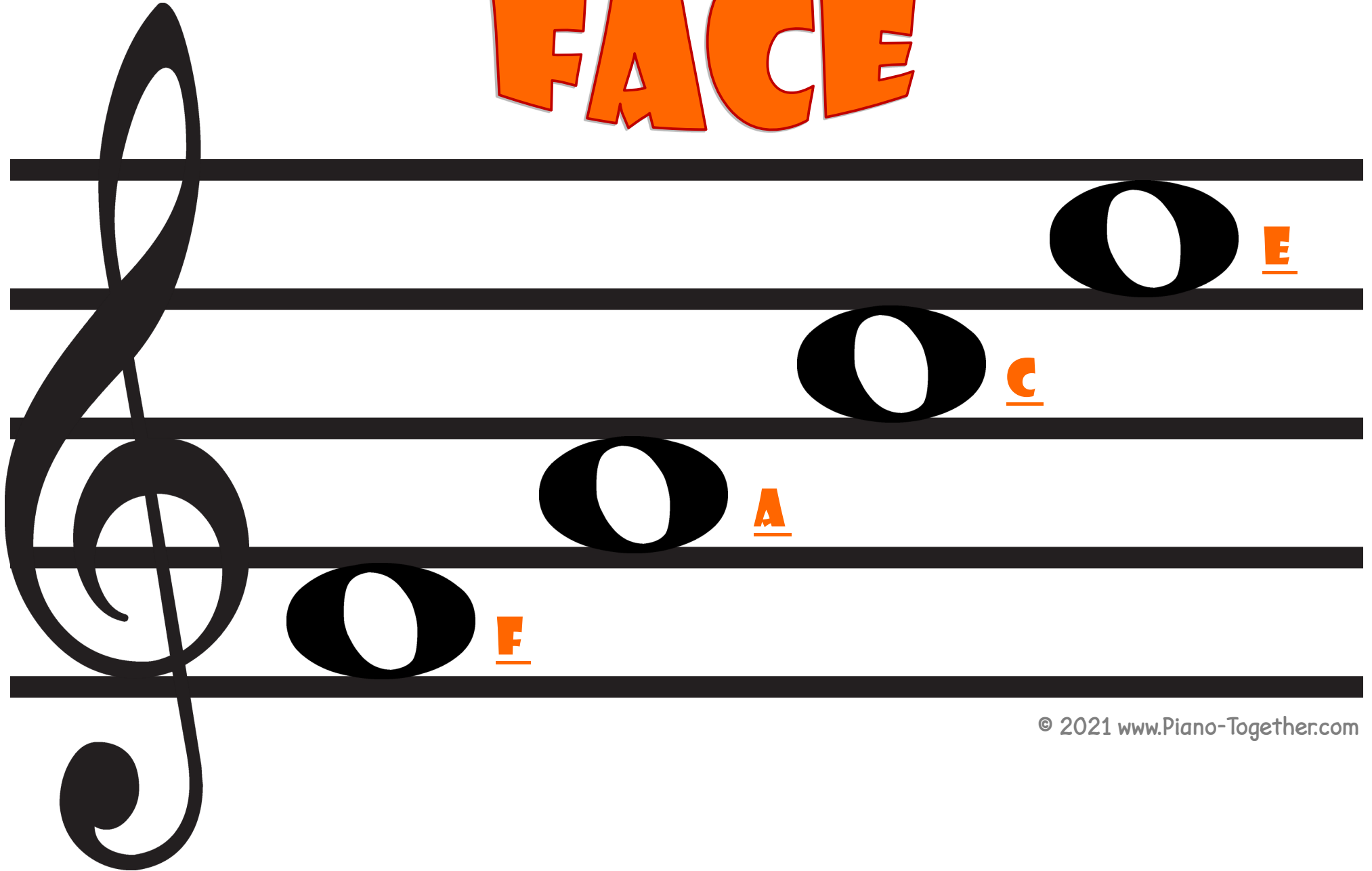


ELEPHANT

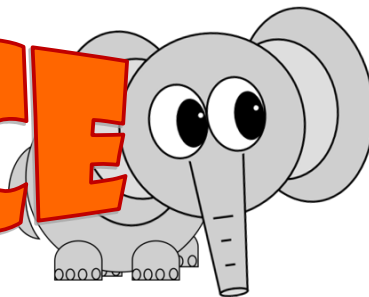


NOTES IN THE TREBLE SPACE SPELL

FACE

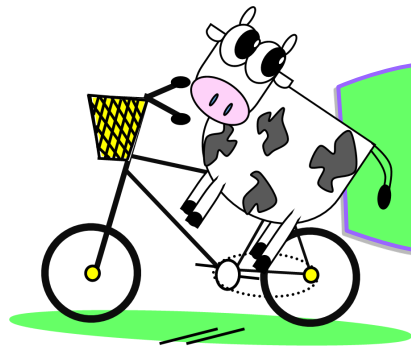


ELEPHANT-FACE



Music Notes Spelling Bee - © www.PianoInColor.com

**ELEPHANTS GET BIG DIRTY FEET
NOTES IN A SPACE SPELL-FACE**



BIKING

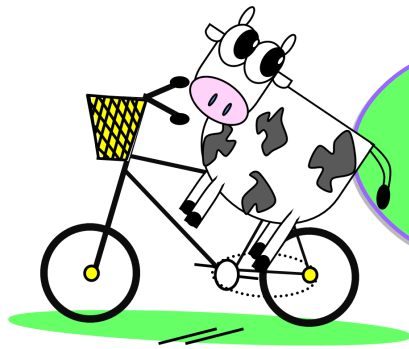
APART

FALL

DON'T

BIKES

GOOD



cows

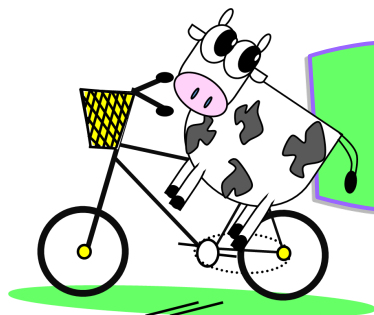
Handwriting practice lines for the letter 'O'. Each line contains a large 'O' and a word starting with 'O'. The first letter of each word is green and underlined.

O GRASS

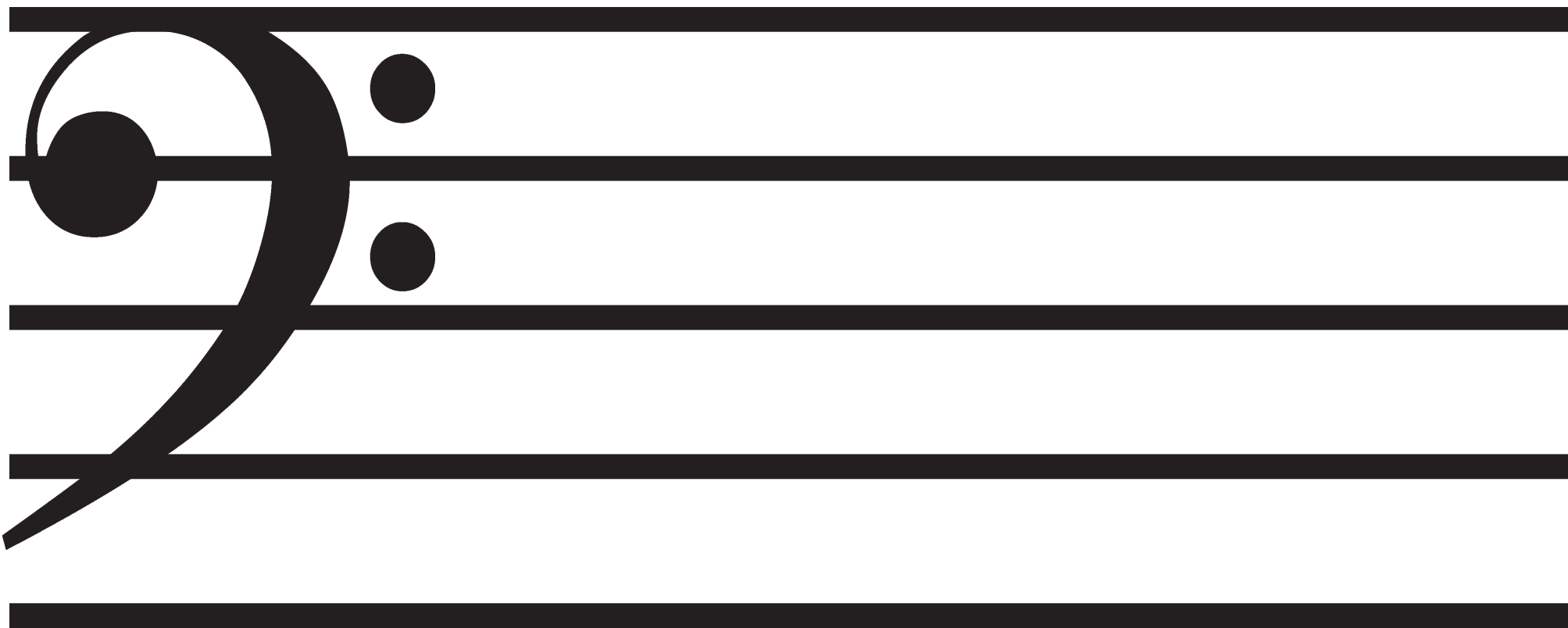
O EAT

O COWS

O ALL



BIKING COWS

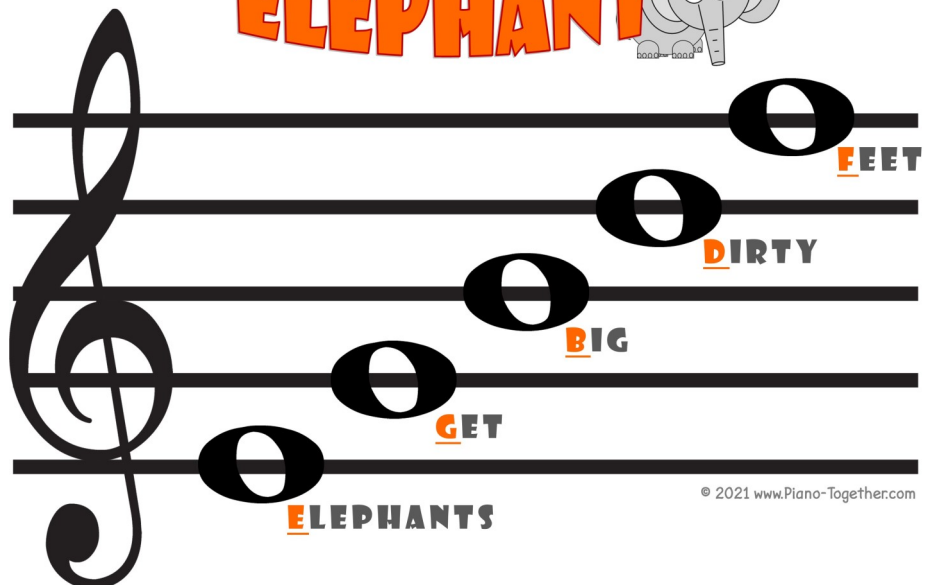
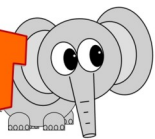


© 2021 www.Piano-Together.com

GOOD BIKES DON'T FALL APART

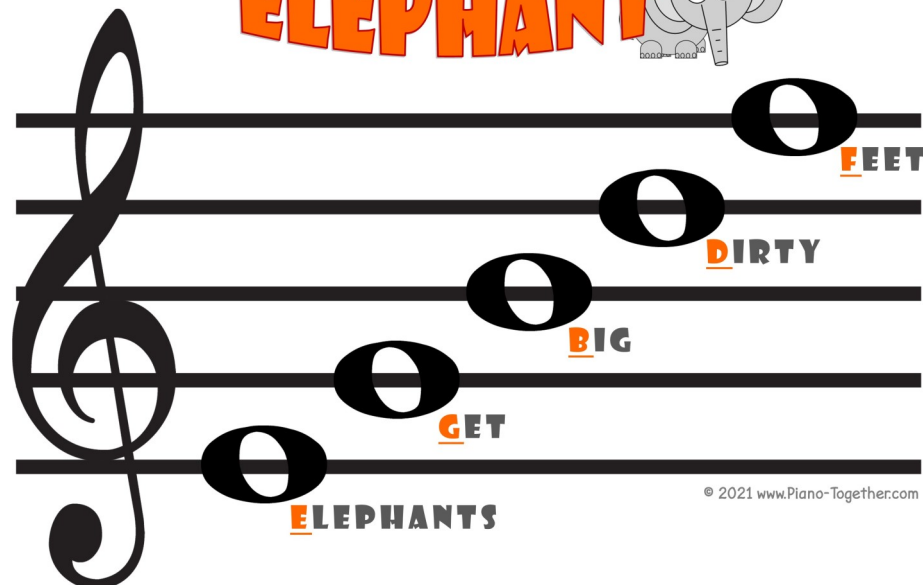
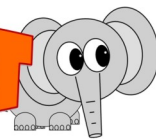
ALL COWS EAT GRASS

ELEPHANT



© 2021 www.Piano-Together.com

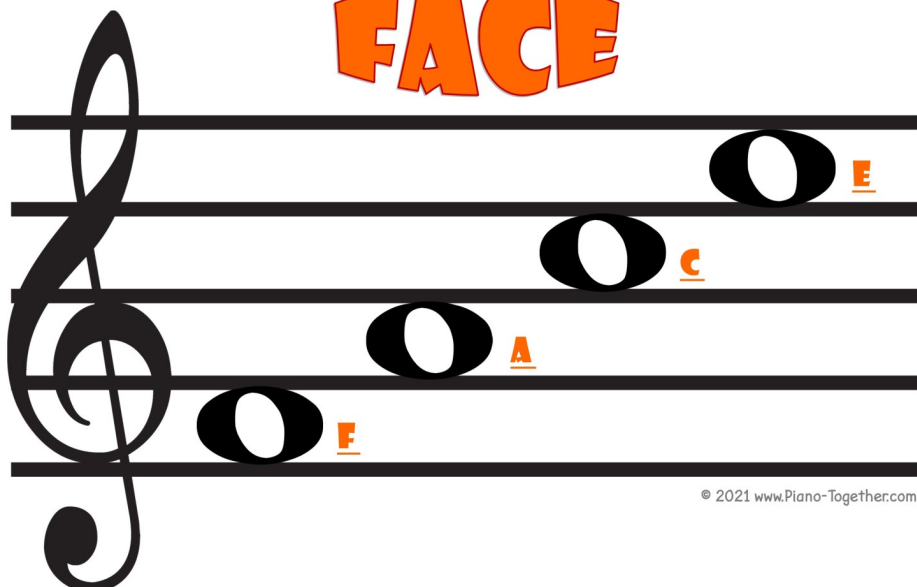
ELEPHANT



© 2021 www.Piano-Together.com

NOTES IN THE TREBLE SPACE SPELL

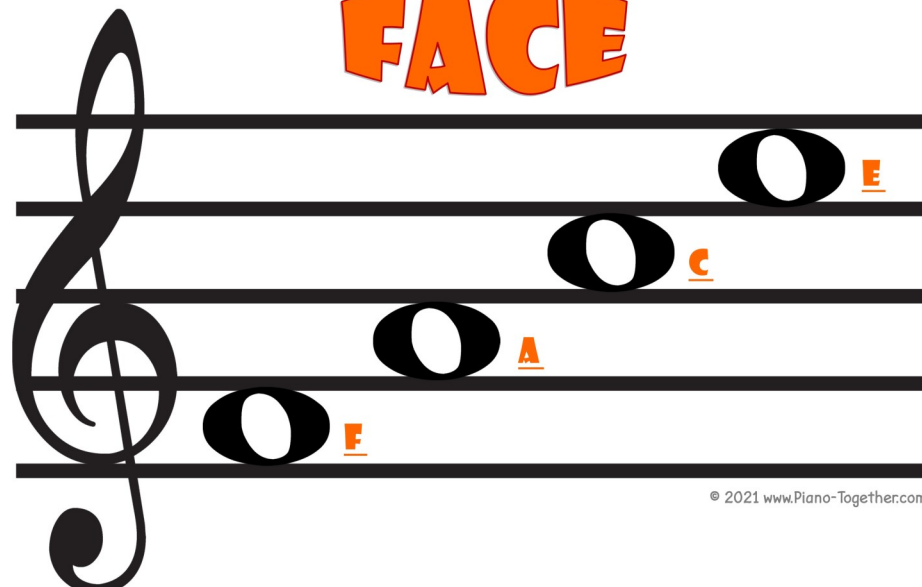
FACE



© 2021 www.Piano-Together.com

NOTES IN THE TREBLE SPACE SPELL

FACE



© 2021 www.Piano-Together.com



BIKING

Musical notation on a five-line staff with a bass clef. The notes and their corresponding words are:

- Top line: **A**PART
- Second line: **F**ALL
- Third line: **D**ON'T
- Fourth line: **B**IKES
- Fifth line: **G**OOD

© 2021 www.Piano-Together.com



BIKING

Musical notation on a five-line staff with a bass clef. The notes and their corresponding words are:

- Top line: **A**PART
- Second line: **F**ALL
- Third line: **D**ON'T
- Fourth line: **B**IKES
- Fifth line: **G**OOD

© 2021 www.Piano-Together.com



COWS

Musical notation on a five-line staff with a bass clef. The notes and their corresponding words are:

- Top line: **G**RASS
- Second line: **E**AT
- Third line: **C**OWS
- Fifth line: **A**LL

© 2021 www.Piano-Together.com



COWS

Musical notation on a five-line staff with a bass clef. The notes and their corresponding words are:

- Top line: **G**RASS
- Second line: **E**AT
- Third line: **C**OWS
- Fifth line: **A**LL

© 2021 www.Piano-Together.com