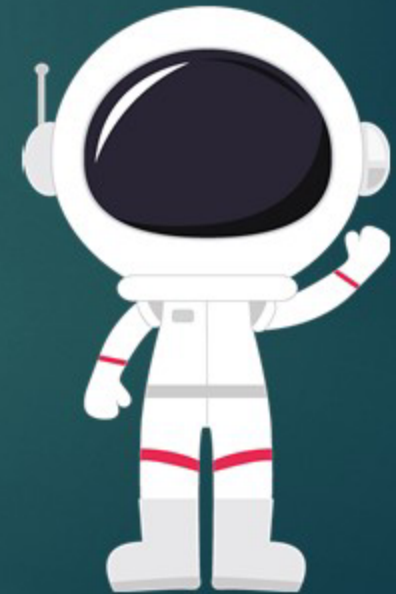
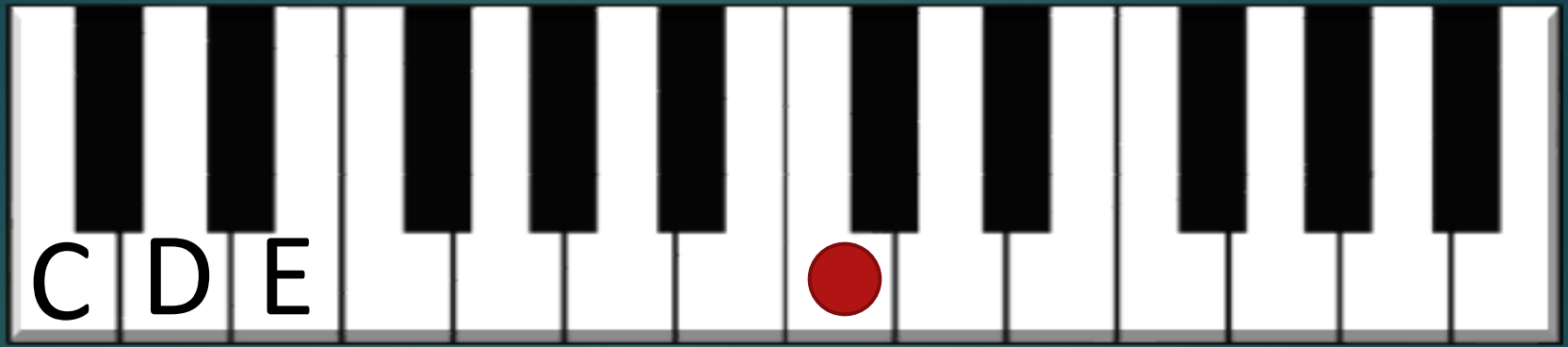




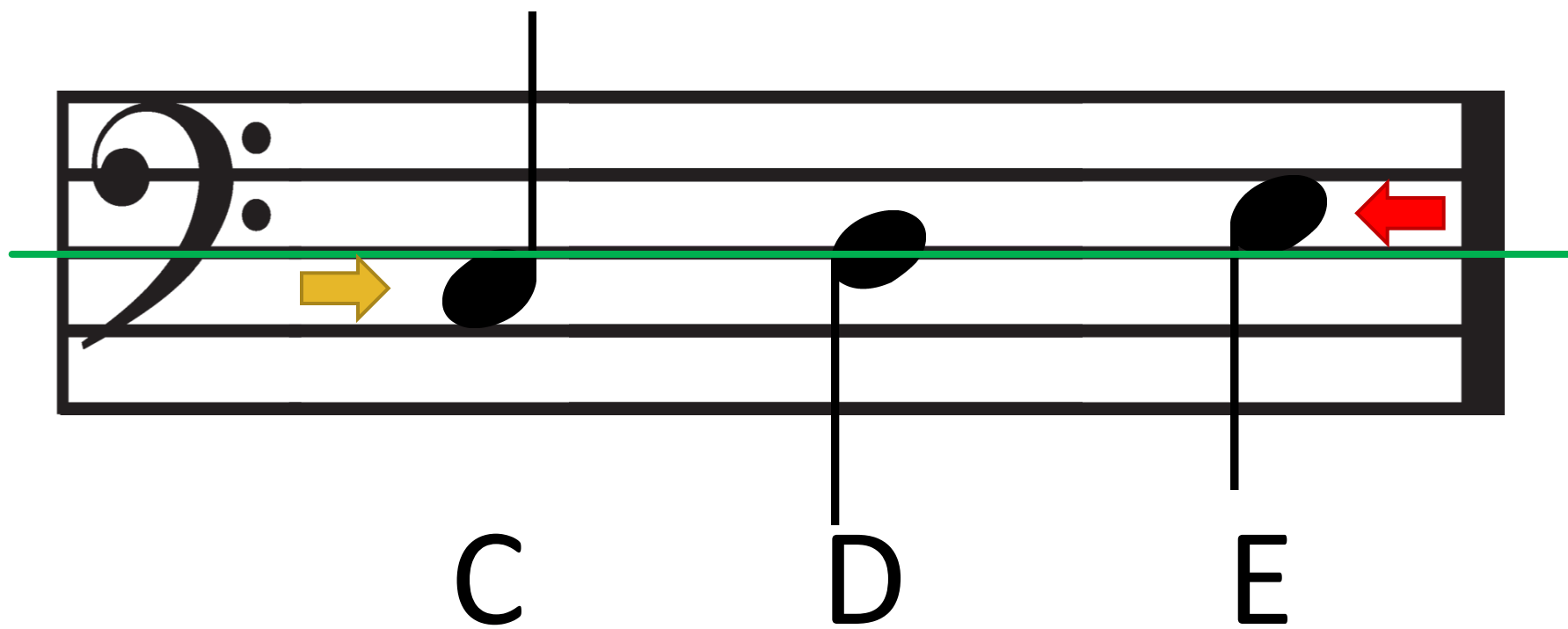
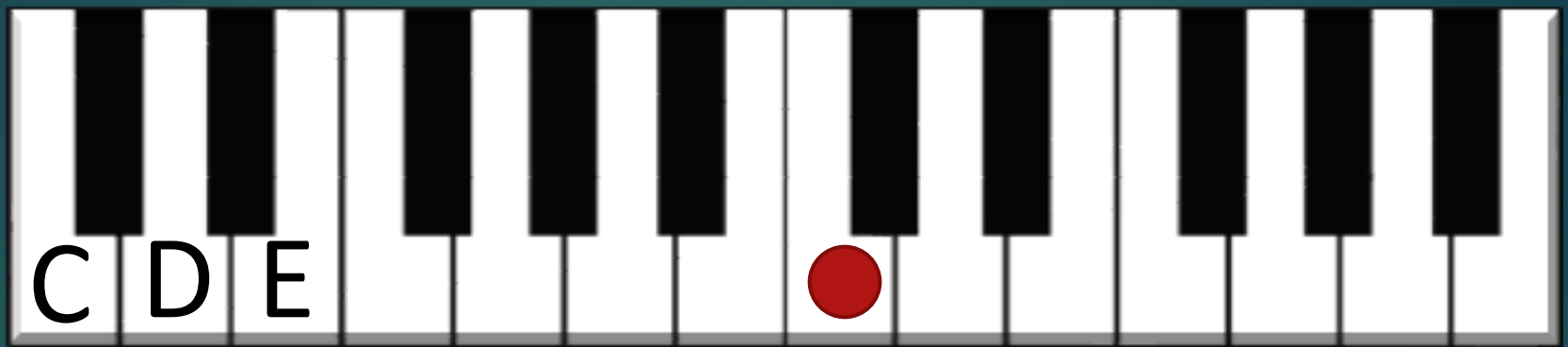
Bass Clef C, D, E

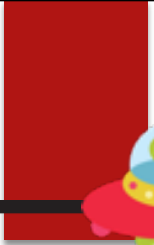




A musical staff in bass clef showing three notes: C, D, and E. The notes are positioned on the second, third, and third lines of the staff respectively. Fingerings are indicated by blue numbers: 2 for C, 3 for D, and 3 for E. A yellow arrow points from the left towards the C note, and a red arrow points from the right towards the E note. A green horizontal line is drawn across the staff, passing through the middle of the C and D notes.

C D E

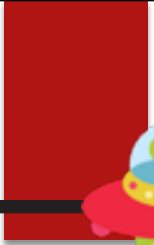




5

4





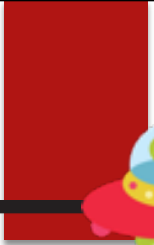
A musical staff with a bass clef and a key signature of one flat. The staff contains a sequence of seven notes: G2, F2, E2, D2, C2, B1, and A1. A vertical bar line is placed between the fourth and fifth notes. A large number '5' is positioned below the first note. A rocket ship is positioned at the bottom left of the staff.

5

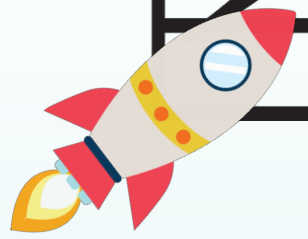


A musical staff with a bass clef and a key signature of one flat. The staff contains a sequence of seven notes: G2, F2, E2, D2, C2, B1, and A1. A vertical bar line is placed between the fourth and fifth notes. A large number '5' is positioned below the first note. A rocket ship is positioned at the bottom left of the staff.

5



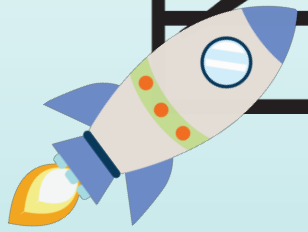
A musical staff with a bass clef and a key signature of one flat. The staff contains six notes: G2, A2, B2, G2, A2, B2. A vertical bar line is placed between the third and fourth notes. A small rocket ship is positioned at the bottom left of the staff, and the number '5' is written below the first note.



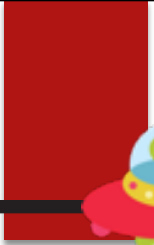
5



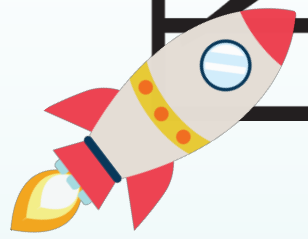
A musical staff with a bass clef and a key signature of one flat. The staff contains six notes: G2, A2, B2, C3, B2, A2. A vertical bar line is placed between the fourth and fifth notes. A small rocket ship is positioned at the bottom left of the staff, and the number '5' is written below the first note.



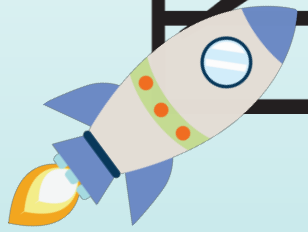
5

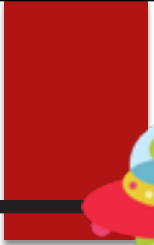


A musical staff with a bass clef and a key signature of two flats. It contains a sequence of six notes: a half note on the second line (F4), a quarter note on the second space (G4), a quarter note on the second space (G4), a quarter note on the second space (G4), a quarter note on the second space (G4), a quarter note on the second space (G4), and a half note on the second line (F4). A vertical bar line is placed between the third and fourth notes. The number '4' is written below the first note.

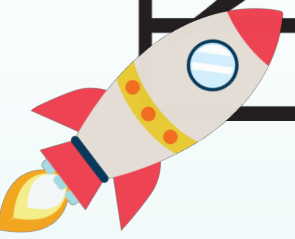


A musical staff with a bass clef and a key signature of two flats. It contains a sequence of six notes: a half note on the second space (G4), a quarter note on the second space (G4), a quarter note on the second space (G4), a quarter note on the second space (G4), a quarter note on the second space (G4), and a half note on the second space (G4). A vertical bar line is placed between the third and fourth notes. The number '5' is written below the first note.





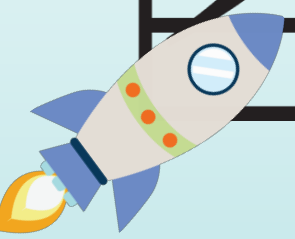
A musical staff with a bass clef and a 3/4 time signature. The melody consists of the following notes: G2 (quarter), E2 (quarter), G2 (quarter), A2 (quarter), B2 (quarter), G2 (quarter), and E2 (quarter). A vertical bar line is placed between the second and third measures. A rocket ship is positioned at the bottom left of the staff.



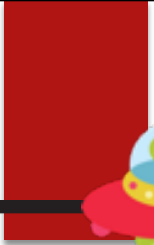
3



A musical staff with a bass clef and a 3/4 time signature. The melody consists of the following notes: G2 (quarter), A2 (quarter), B2 (quarter), G2 (quarter), E2 (quarter), G2 (quarter), and E2 (quarter). A vertical bar line is placed between the fourth and fifth measures. A rocket ship is positioned at the bottom left of the staff.



3



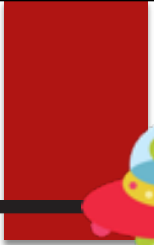
A musical staff with a bass clef and a key signature of two flats. It contains two measures of music. The first measure has a whole note on the second line (F4) with a '5' below it, followed by two eighth notes on the second and third lines (G4 and A4). The second measure has a whole note on the second line (F4), followed by two eighth notes on the second and third lines (G4 and A4). A rocket ship is on the left and a UFO is on the right.

5



A musical staff with a bass clef and a key signature of two flats. It contains two measures of music. The first measure has a whole note on the second line (F4), followed by three eighth notes on the second, third, and fourth lines (G4, A4, and B4). The second measure has a whole note on the second line (F4), followed by two eighth notes on the second and third lines (G4 and A4). A rocket ship is on the left and a UFO is on the right.

3



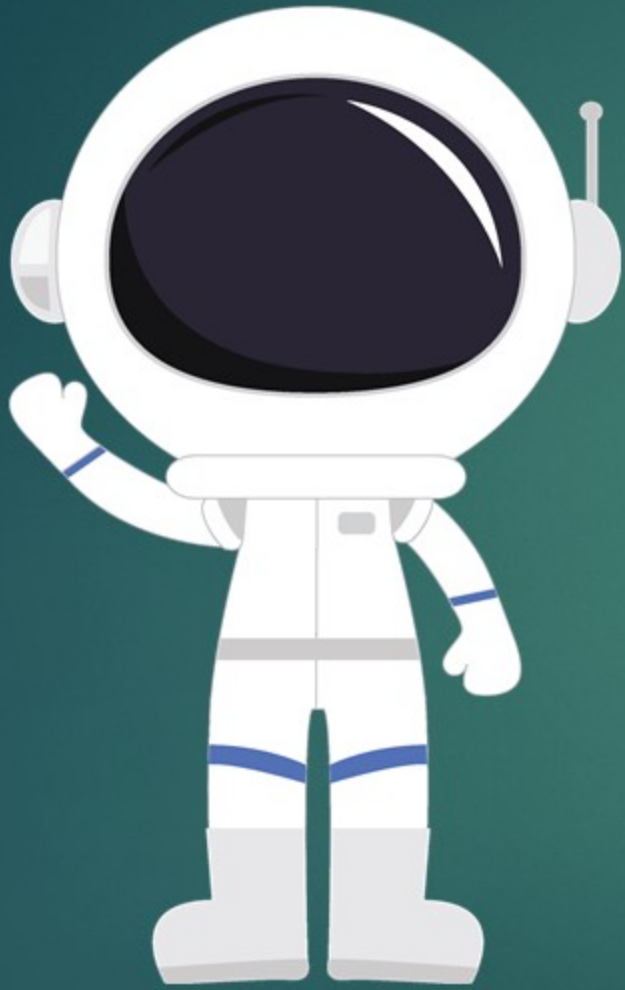
A musical staff with a bass clef and a key signature of two flats. It contains two measures of music. The first measure has three quarter notes: G2, F2, and E2. The second measure has three quarter notes: D2, C2, and B1. A large number '5' is positioned below the first measure. A rocket ship is on the left and a UFO is on the right.

5



A musical staff with a bass clef and a key signature of two flats. It contains two measures of music. The first measure has four quarter notes: G2, F2, E2, and D2. The second measure has two quarter notes: C2 and B1. A large number '3' is positioned below the first measure. A rocket ship is on the left and a UFO is on the right.

3



Great Job!
Keep
Practicing.

PRACTICE MAKES PROGRESS