

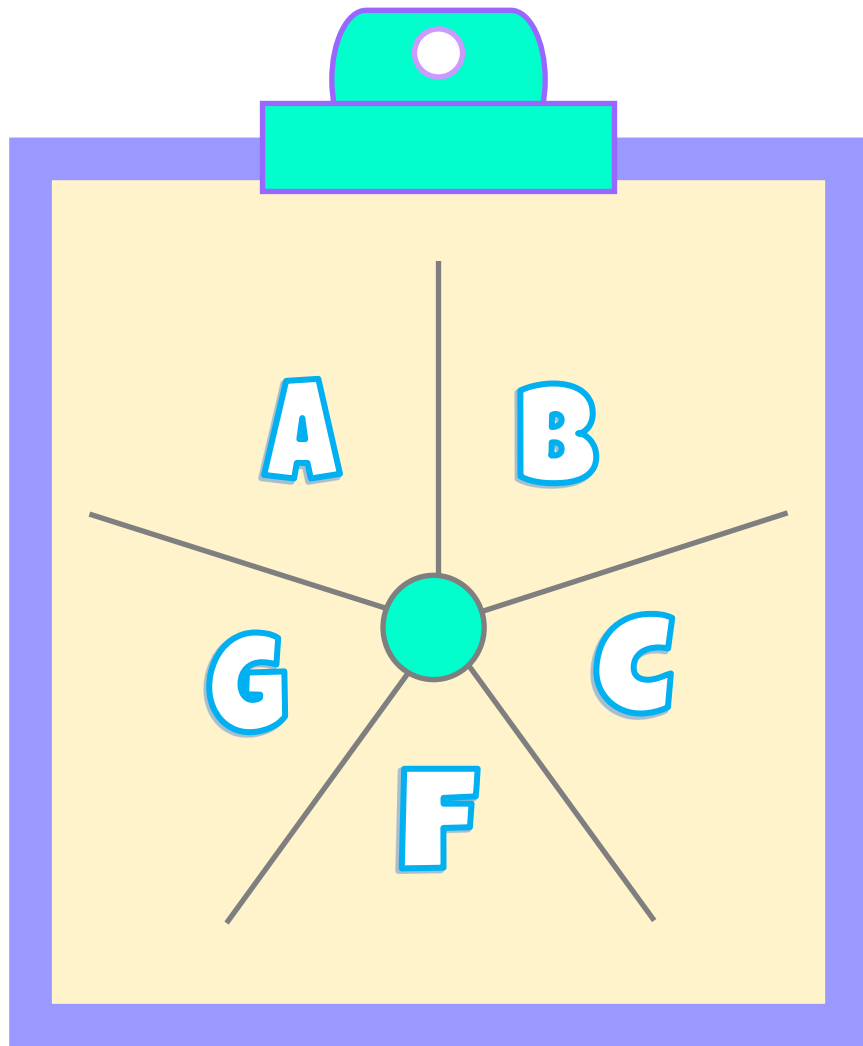
TAKE NOTES



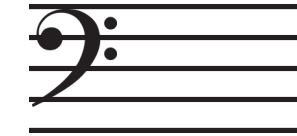
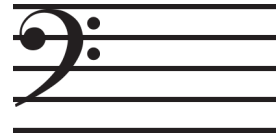
Spin the spinner. Draw the note that matches the name shown on the spinner. Repeat for each staff.



TAKE NOTES



Spin the spinner. Draw the note that matches the name shown on the spinner. Repeat for each staff.



MIDDLE C POSITION NOTES

The image displays two musical staves. The top staff is in treble clef and the bottom staff is in bass clef. Both staves show five notes in the middle C position, each represented by a black oval with a white center. The notes are labeled with letters: C, D, E, F, and G. The labels are color-coded: C is red, D is black, E is black, F is red, and G is red in the treble clef; and C is blue, B is black, A is black, G is blue, and F is blue in the bass clef.

Staff	Line	Note	Label
Treble Clef	1st	C	C
	2nd	D	D
	3rd	E	E
	4th	F	F
	5th	G	G
Bass Clef	1st	C	C
	2nd	B	B
	3rd	A	A
	4th	G	G
	5th	F	F